

# Boats-Yachts.net

*International Yachtbrokerage*

*The Owner's Website*

Ref:- S011

## 36' Hillyard Moonfleet Centrecockpit



- Year: 1988
- **Current Price: £57,950(€77,150)**
- Located in Marmaris
- Hull Material: Fiberglass
- Engine/Fuel Type: Single Diesel



A 1988 Moonfleet 36 designed by Laurent Giles and built by Hillyard. Centre cockpit cruiser built to the highest of standards. Mahogany, American Oak and Maple interior. Good inventory and benefits from continued maintenance throughout the years. She can be handled by a couple, or would be a great family boat also.

### **Additional Specs, Equipment and Information:**

#### **Engines**

Engine(s): Single Diesel – Perkins 4-108

#### **Description**

MOONFLEET 36 BUILT IN 1988

Designed by Laurent Giles, built by David Hillyard

#### **Construction**

Hull - solid isophthalic laminate built to excess of Lloyds standards by IMC

Deck - Conventional balsa sandwich

Monocular Construction

Cast iron fin keel(Removed, and resealed in 2002)

Stainless keel bolts

LOA 11m (36' 0")  
LWL 8.8m (29' 0")  
BEAM 3.74M(12' 4")  
DRAFT 1.7m (5' 6")  
Displacement 18,500lbs

Partial skeg supported ,balanced rudder with a stainless rudder post and bronze heel shoe  
 Whitlock steering push/pull cable system with stainless Destroyer wheel and pedestal  
 Cockpit - 2 full length teak laid seats port and starboard  
 Teak cockpit grating and teak cockpit table

### Inventory

#### NAVIGATION AIDS:

Autohelm 3000 autopilot  
 Stowe wind speed, direction, depth and speed in cockpit  
 Riviera White Star Steering compass  
 Two(2) Garmin GPS 50  
 Nasa Target Navtex  
 Nasa Stingray 5600 VHF  
 Swiftech M198 handheld VHF  
 Handheld Autohelm Digital Compass

### General Equipment

Alloy Deck cleats & Fairleads  
 Outboard brackets to starboard  
 Navigation Lights  
 Aft deck lazarette stowage inc gas locker  
 Electric bilge pump with float switch  
 Henderson manual bilge pump  
 Crockery and cutlery  
 Radio/Cassette/CD stereo player  
 Spray hood and cockpit cover (enclosure)  
 Inflatable R.I.B.  
 Mercury 5HP outboard  
 Colour TV & DVD Player  
 Plastimo Cruiser 4 Liferaft  
 Ship's Bell  
 Portable Refrigerator  
 Cockpit Table  
 Diesel Fired hot air cabin heater



### Machinery

PERKINS 4-108 49HP DIESEL ON FLEXIBLE MOUNTS  
 Sound Insulation  
 Water-cooled exhaust  
 3 blade fixed propeller  
 Access panels on all four sides  
 Easy view engine water strainer and seacock are just inside engine compartment.



### Electrics

Domestic:- Two(2) Maintenance free 105 ampr batteries (new)  
 Engine Start:- One(1) 120ampr Maintenance free(new)  
 12V/240V distribution/breaker panel (several UK type sockets throughout boat)  
 Battery charger  
 Hot Water Tank

### Tankage

Two(2) stainless steel freshwater tanks with total capacity of 70 gallons  
 Two(2) stainless steel diesel tanks giving 45 gallons capacity

### Water System

Pressurized water system utilizing Jabsco ParMax and semi-rigid plastic tubing  
 14 gallon calorifier with 240V immersion heater  
 Manual cold freshwater pump in Galley

### Mast & Rigging

Sloop rig  
 Silver anodized mast by Kemp  
 Silver anodized boom, rod kicker by Kemp  
 Stainless standing rigging

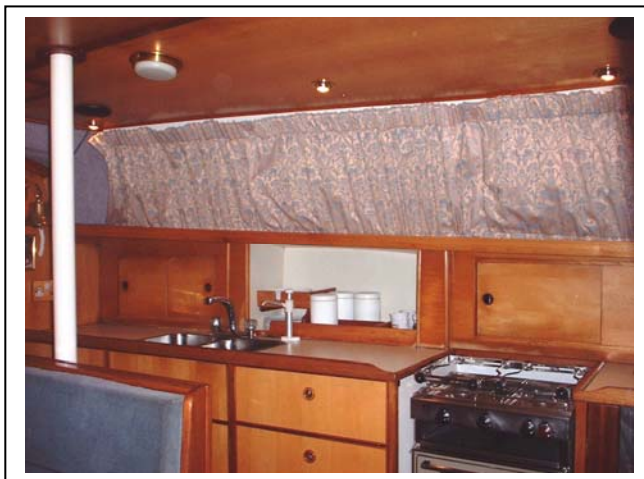
Running rigging and traveler  
 Kemps Furlex roller forestay  
 Lewmar mainsheet traveler controls  
 Lewmar sliding genoa cars on tracks  
 Radar Reflector  
 Tri-colour(new)

#### Sails

Jeckells Main, 3 reefs  
 Large furling genoa  
 Cruising Shute  
 Storm jib

#### Winches

Two(2) Lewmar sheet winches  
 Two(2) Lewmar Halyard winches



#### Accommodation

##### FORWARD CABIN:

Two single full length 'V' berths with foam mattresses  
 Infill cushion to convert berths into double  
 Large stowage compartments under berths  
 Lewmar escape hatch overhead  
 Dorade ventilator  
 Vanity locker and hanging cupboard  
 Doors to both saloon and forward heads compartment

##### FORWARD HEADS COMPARTMENT:

Access doors to both saloon and forward cabin  
 Stainless washbasin set in Formica worktop  
 Shower mixer tap with shower tray and teak grating  
 Shower tray pumps overboard via electric pump  
 Jabsco seawater toilet with Blakes bronze seacocks  
 Deck hatch



##### SALOON:

Saloon foam mattress seating around dining table with upholstered backs  
 Seating has stowage lockers under  
 Lockers to port with book shelf  
 Lined holly effect Teak floors  
 Galley to starboard

##### GALLEY:

Double stainless steel sinks surrounded by large Formica covered worktop.  
 Above worktop are several lockers for food and crockery stowage  
 Below are several sliding drawers and cupboards  
 Pantry style storage aft  
 Gimballed gas cooker with 2 burners, grill and oven  
 Stainless crash bar  
 Hot and cold mixer tap to sink  
 Manual Fresh water hand pump

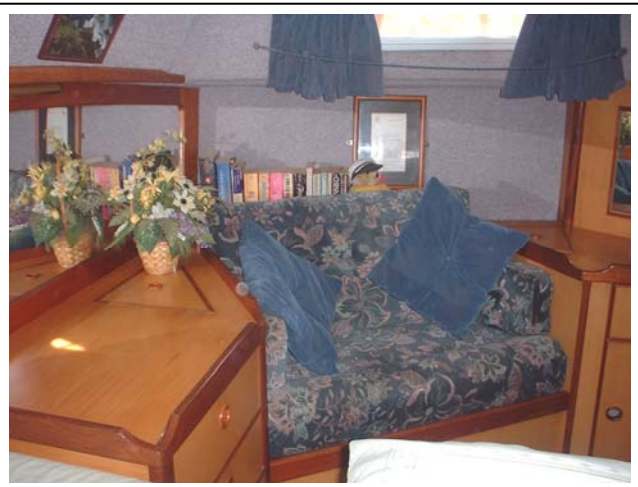
##### WORKSHOP:

Small functional workshop aft of Galley to Port

##### NAV AREA:

Comfortable chart table and seat in passageway leading aft.





#### AFT CABIN:

Owners Suite'

Double berth with foam mattress with large stowage compartment underneath.

Cabin seat with back and arm rests, stowage beneath and to sides.

Hanging locker, drawers and lockers

Twin Dorade ventilation

Lewmar escape hatch overhead

Carpeted floor

Large mirror with light

Access door to aft heads compartment

#### AFT HEADS COMPARTMENT:

Stainless washbasin in Formica worktop with locker below

Jabsco seawater toilet with Blakes bronze seacocks

Hot and cold mixer taps

#### Ground Tackle

45lb plow on 50M 10mm galvanized chain with swivel

Manual single speed anchor windlass

35lb COR, 30lb Danforth

Additional Rode:-

100M 20mm anchor plait

50M 8mm galvanized chain

30M 8mm galvanized chain to 30M 12mm Anchor Plait

#### Chain Locker

Accessible from forward cabin via removable bulkhead hatch which is covered with a fabric lined panel



Underwater Detail



Deck Details



Note Hydrovane Wind Steering



Engine Details

**Asking Price: €77,150**

Whilst every care has been taken in their preparation, the correctness of these particulars is not guaranteed. The particulars are intended only as a guide and they do not constitute a term of any contract. A prospective buyer is strongly advised to check the particulars and where appropriate at his own expense to employ a qualified Marine Surveyor to carry out a survey and to have a sea trial conducted

### **Comments:**

An opportunity to buy a comfortable offshore cruising and liveaboard yacht with systems maintained and upgraded.

**Lying: Marmaris**

**Contact for further Information and appointment to view:**

**Email:- [listing@boats-yachts.net](mailto:listing@boats-yachts.net)**